



Lakelands Concrete Products, Inc.  
 7520 East Main St., Lima, NY 14485  
 Phone: 585-624-1990, Fax: 585-624-2102

Web: www.lakelandsconcrete.com  
 E-mail: sales@lakelandsconcrete.com

Date: 9/23/09

DWG: 4 Foot Dia

### 4'-0" Diameter Manhole

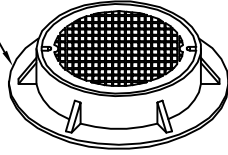
Design Criteria:

- Concrete: 4000 Psi @28 Days
- Entrained Air: 5% - 9%
- Design Loading: AASHTO H-25
- Reinforcement: BAR-ASTM A615 GR60  
WWR-ASTM A185

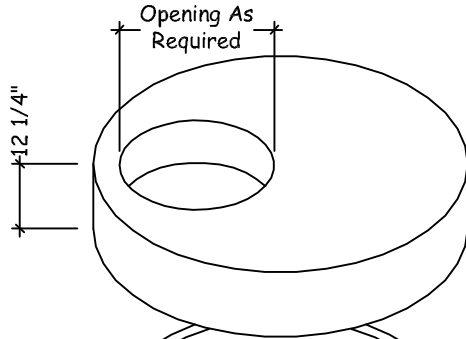
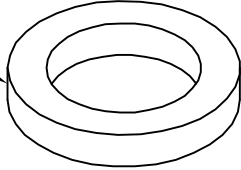
Specifications:

1. Joints Sealed With Butyl Sealant - ASTM C990
2. Monolithic Construction
3. Meets ASTM C478
4. Bitumastic Coating (If Required)
5. "O" Ring Gasket (If Required)
6. 3'-0" Eccentric Cone (If Required)

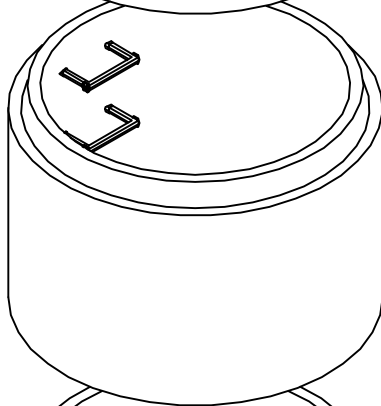
Syracuse Casting  
 Frame & Cover



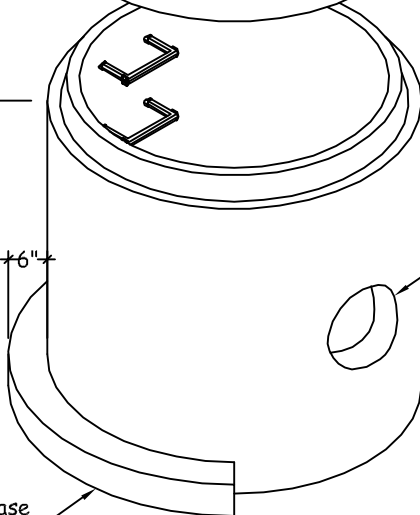
6" Grade Ring  
 (If Required)  
 Note: Height  
 can vary



Riser Section  
 1'-0" - 4'-0"  
 6" Increments

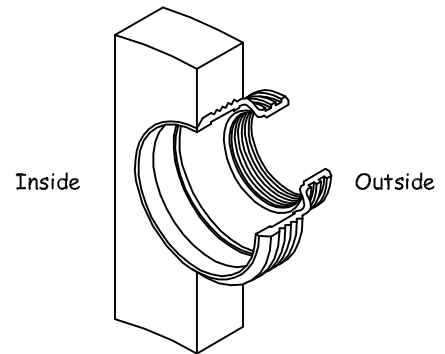


Base Section  
 2'-0" - 5'-0"  
 1'-0" Increments  
 6" Base

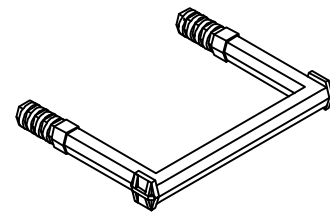


Extended Base  
 Slab Optional

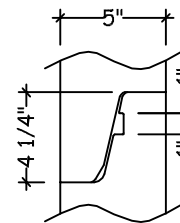
Isometric View



Kon-N-Seal Boots  
 From NPC



M.A. Industries  
 Manhole Step  
 PS-1PF



Joint Detail