



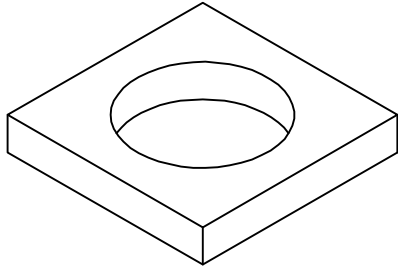
Lakelands Concrete Products, Inc.
 7520 East Main St., Lima, NY 14485
 Phone: 585-624-1990, Fax: 585-624-2102

Web: www.lakelandsconcrete.com
 E-mail: sales@lakelandsconcrete.com

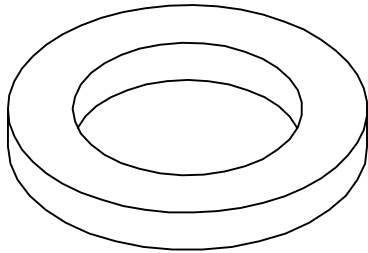
Date: 7/5/11

DWG: Grade Rings

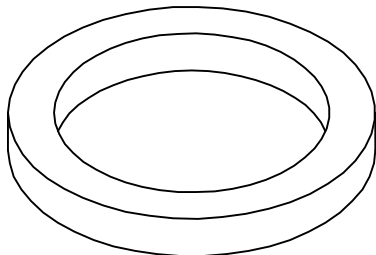
Grade Rings
 Various Sizes



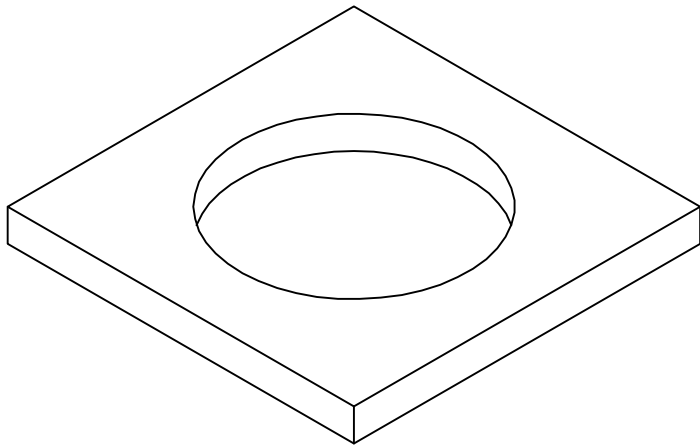
Model No.	Inside Dia.	Outside Dim	Height	Weights
GR-24D6	24"	36"	6"	450
GR-24D12	24"	36"	12"	882



Model No.	Inside Dia.	Outside Dia.	Height	Weights
GR-30D4	30"	47"	4"	352
GR-30D6	30"	47"	6"	534



Model No.	Inside Dia.	Outside Dia.	Height	Weights
GR-36D3	36"	48"	3"	206
GR-36D6	36"	48"	6"	410



Model No.	Inside Dia.	Outside Dim.	Height	Weights
GR-42D6	42"	64"	6"	1418
GR-42D9	42"	64"	9"	2127
GR-42D12	42"	64"	12"	2835

Specifications:

Concrete: 5000psi @ 28 Days
 Entrained Air: 5% - 9%
 Design Load: AASHTO HS20
 Reinforcing: BAR-ASTM A615 GR60
 WWR-ASTM A185/A497 GR65

Notes:

Cast Iron Frame And Covers Available



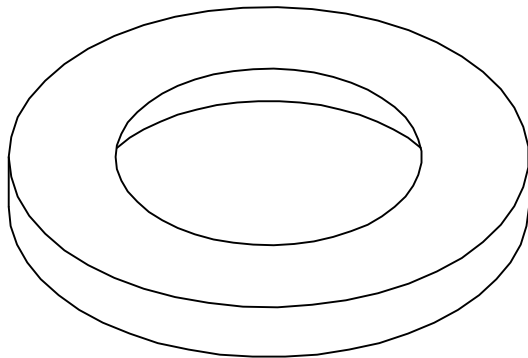
Lakelands Concrete Products, Inc.
 7520 East Main St., Lima, NY 14485
 Phone: 585-624-1990, Fax: 585-624-2102

Web: www.lakelandsconcrete.com
 E-mail: sales@lakelandsconcrete.com

Date: 7/5/11

DWG: Grade Rings

Grade Rings
 Various Sizes

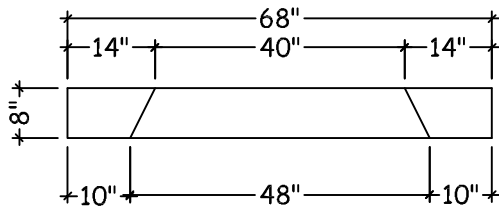


Specifications:

Concrete: 5000psi @ 28 Days
 Entrained Air: 5% - 9%
 Design Load: AASHTO HS20
 Reinforcing: BAR-ASTM A615 GR60
 WWR-ASTM A185/A497 GR65

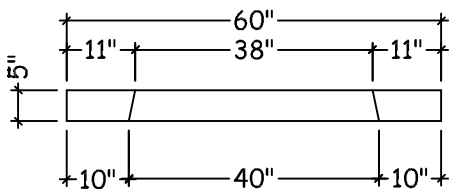
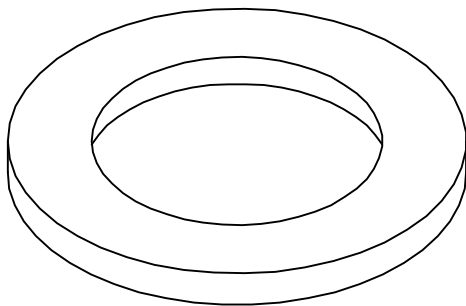
Notes:

Cast Iron Frame And Covers Available



Type 'A' Grade Ring

□ GR-A



Type 'B' Grade Ring

□ GR-B