



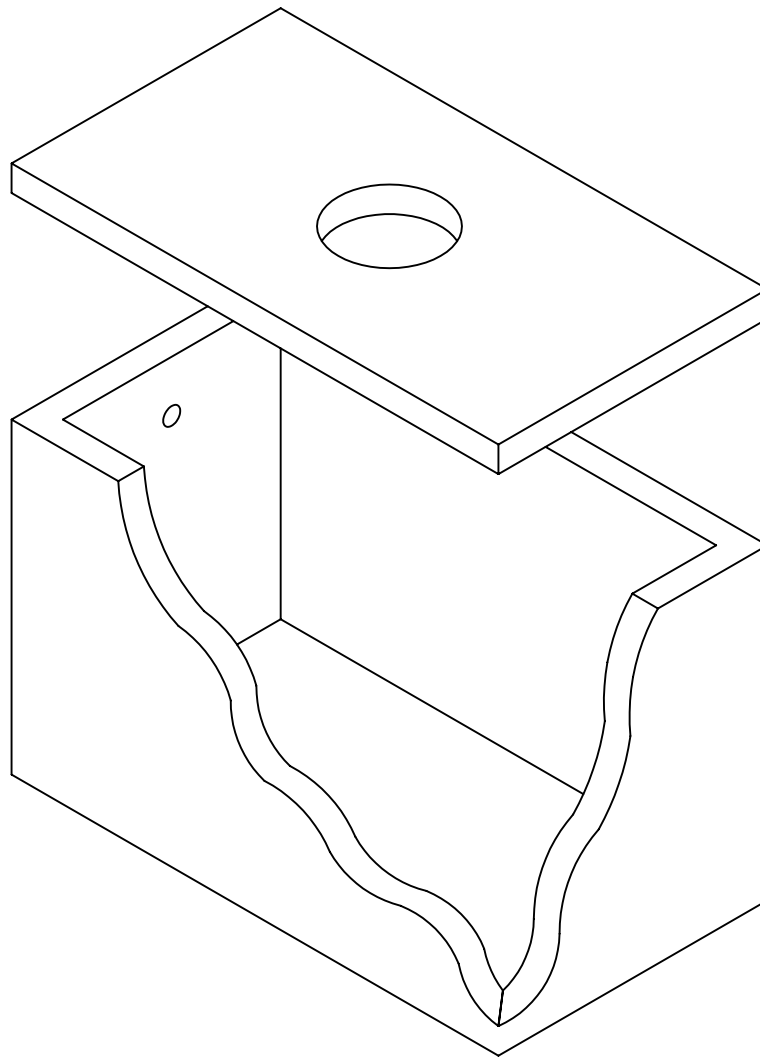
Lakelands Concrete Products, Inc.  
7520 East Main St., Lima, NY 14485  
Phone: 585-624-1990, Fax: 585-624-2102

Web: [www.lakelandsconcrete.com](http://www.lakelandsconcrete.com)  
E-mail: [sales@lakelandsconcrete.com](mailto:sales@lakelandsconcrete.com)

Date: 12/16/10

DWG: HT1200

# 1,200 Gallon Holding Tank





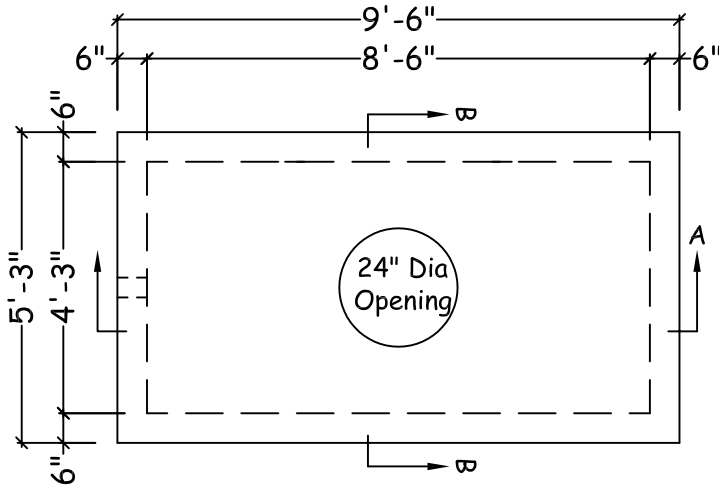
Lakelands Concrete Products, Inc.  
 7520 East Main St., Lima, NY 14485  
 Phone: 585-624-1990, Fax: 585-624-2102

Web: [www.lakelandsconcrete.com](http://www.lakelandsconcrete.com)  
 E-mail: [sales@lakelandsconcrete.com](mailto:sales@lakelandsconcrete.com)

Date: 12/16/10

DWG: HT1200

1,200 Gallon Holding Tank



PLAN VIEW

Specifications:

Design Criteria: 5000 Psi @28 Days

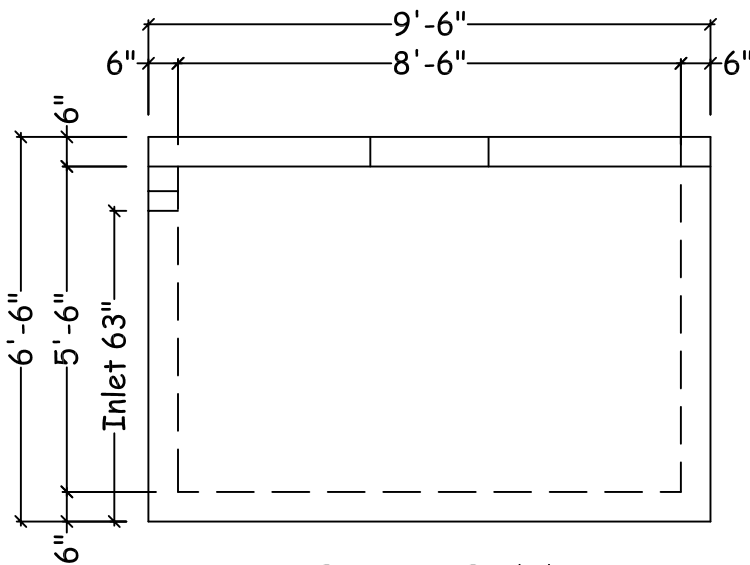
Entrained Air: 5% - 9%

Design Loading: AASHTO HS20-44

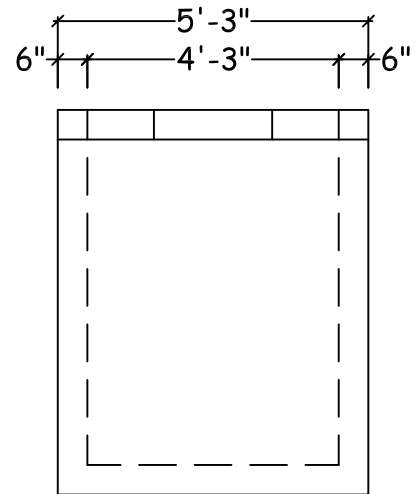
Reinforcement: BAR-ASTM A615 GR60  
 WWR-ASTM A185/A497 GR65

Notes:

\*Cast Iron Frame And Covers Available



SECTION VIEW 'A'



SECTION VIEW 'B'

Weights:

Tank: 13,989 LBS

Cover: 3740 LBS