



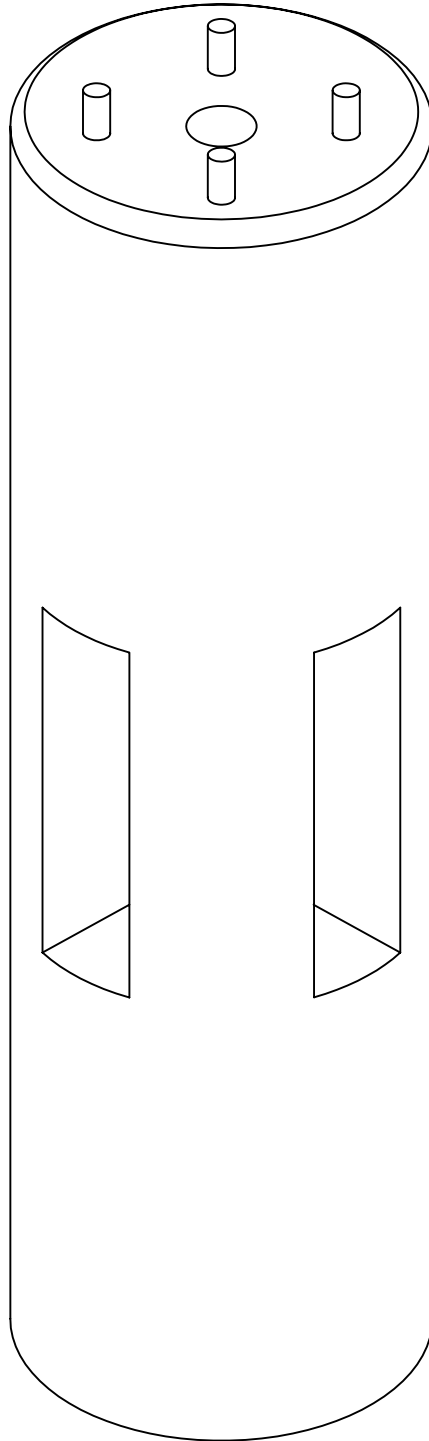
Lakelands Concrete Products, Inc.  
7520 East Main St., Lima, NY 14485  
Phone: 585-624-1990, Fax: 585-624-2102

Web: [www.lakelandsconcrete.com](http://www.lakelandsconcrete.com)  
E-mail: [sales@lakelandsconcrete.com](mailto:sales@lakelandsconcrete.com)

Date: 12/16/10

DWG: LB-LBRD-VS

### Versa-Set Round Lightbase





Lakelands Concrete Products, Inc.  
 7520 East Main St., Lima, NY 14485  
 Phone: 585-624-1990, Fax: 585-624-2102

Web: www.lakelandsconcrete.com  
 E-mail: sales@lakelandsconcrete.com

Date: 7/22/11

DWG: LB-LBRD-VS

## Versa-Set Round Lightbase

Easier, Faster, Inexpensive, Less Confusion,  
Great For Any Project

### Specifications:

Design Criteria: 5000 Psi @28 Days

Entrained Air: 5% - 9%

Reinforcement: BAR-ASTM A615 GR60

WWR-ASTM A185/A497 GR65

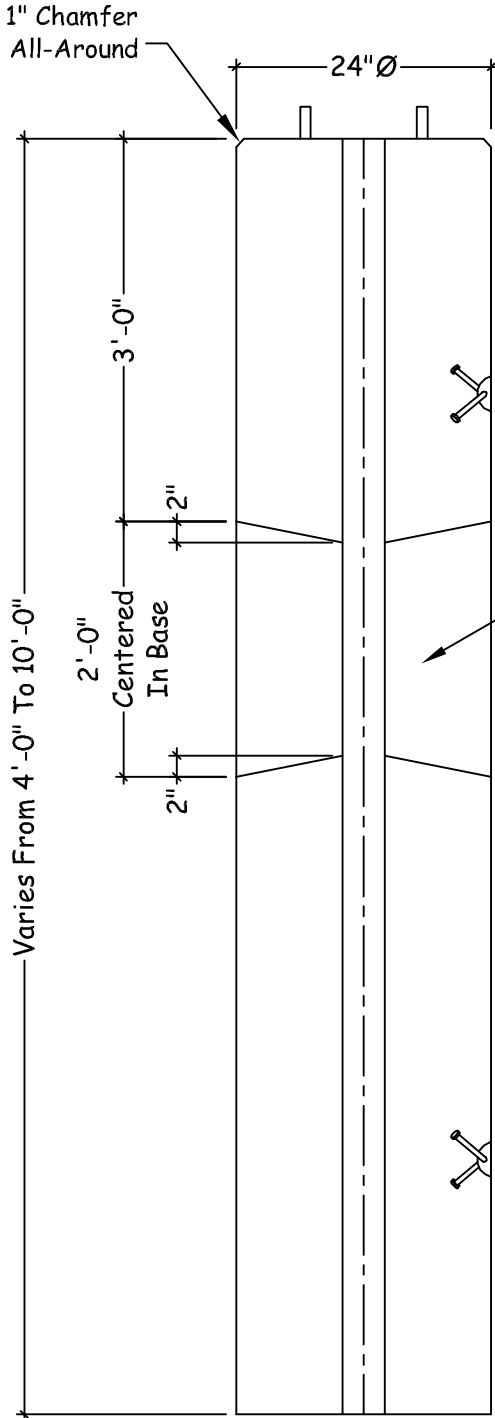
### Notes:

\*Anchor Bolts Supplied By Lightpole  
Manufacturer

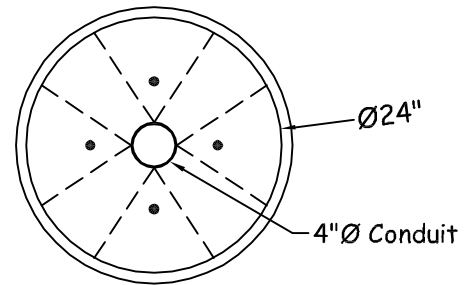
\*Conduit Installed By Contractor

\*Steel Reinforcement As Specified

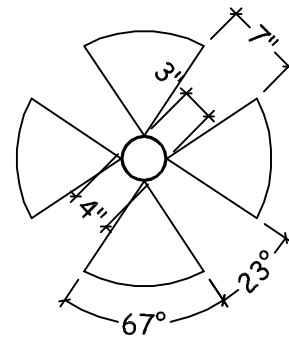
\*Other Round, Square And Tapered Versa-Set  
Lightbases Available Soon



Elevation View



Top View



Section Thru  
Electric Knockout