



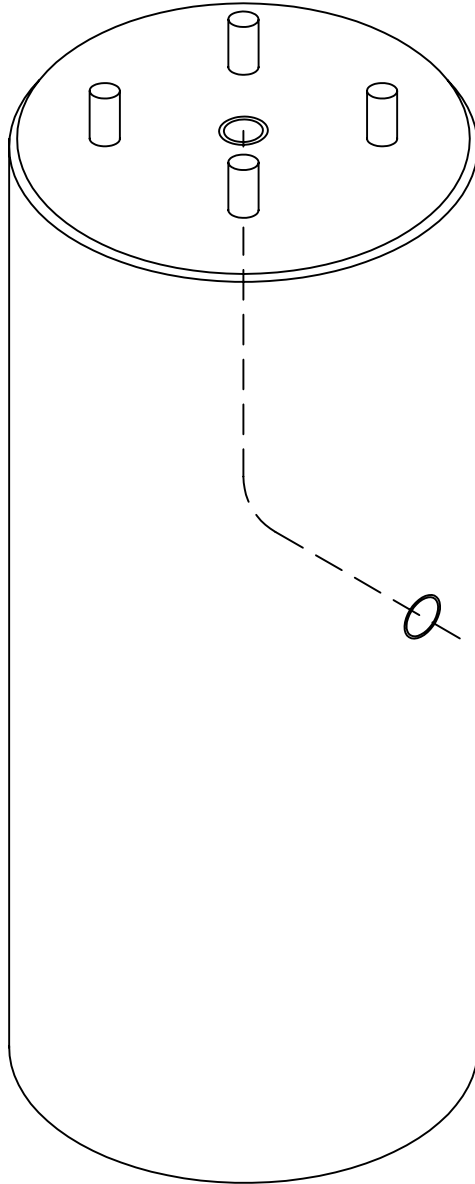
Lakelands Concrete Products, Inc.  
7520 East Main St., Lima, NY 14485  
Phone: 585-624-1990, Fax: 585-624-2102

Web: [www.lakelandsconcrete.com](http://www.lakelandsconcrete.com)  
E-mail: [sales@lakelandsconcrete.com](mailto:sales@lakelandsconcrete.com)

Date: 12/16/10

DWG: LB-LBRD

### Round Lightbase





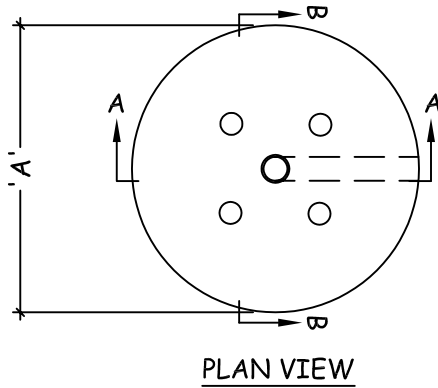
Lakelands Concrete Products, Inc.  
 7520 East Main St., Lima, NY 14485  
 Phone: 585-624-1990, Fax: 585-624-2102

Web: www.lakelandsconcrete.com  
 E-mail: sales@lakelandsconcrete.com

Date: 12/16/10

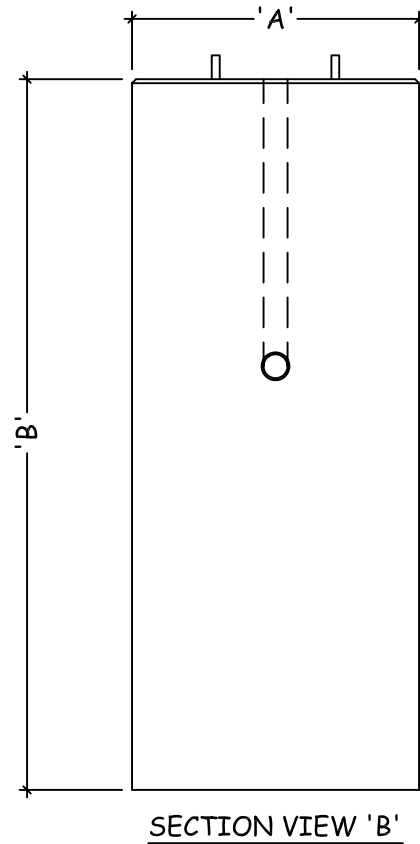
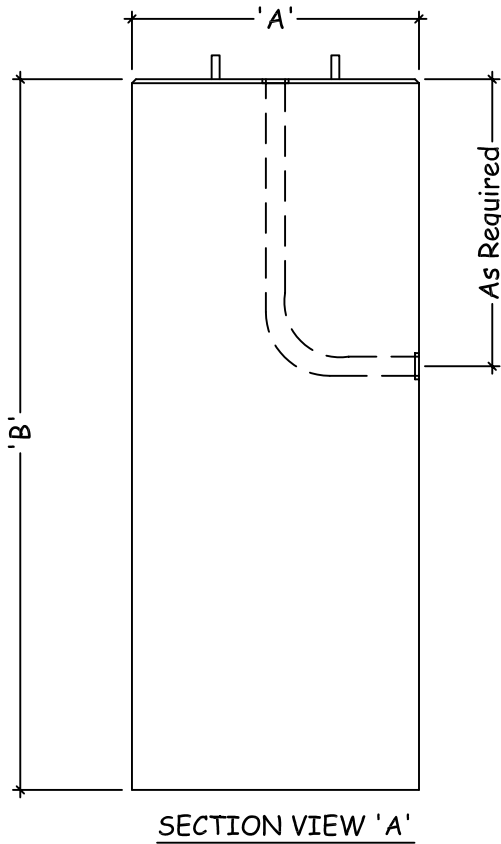
DWG: LB-LBRD

Round Lightbase



Specifications:  
 Design Criteria: 5000 Psi @28 Days  
 Entrained Air: 5% - 9%  
 Reinforcement: BAR-ASTM A615 GR60  
 WWR-ASTM A185/A497 GR65

Notes:  
 \*Anchor Bolts Supplied By Lightpole Manufacturer  
 \*Size And Type Of Conduit Specified By Contractor  
 \*Steel Reinforcement As Specified  
 \*Bases Can Be Poured Other Heights



Model No.	A	B	Model No.	A	B	Model No.	A	B	Model No.	A	B
LB18D48	18"	48"	LB24D66	24"	66"	LB30D66	30"	66"	LB36D72	36"	72"
LB18D54	18"	54"	LB24D72	24"	72"	LB30D72	30"	72"	LB36D78	36"	78"
LB18D60	18"	60"	LB24D78	24"	78"	LB30D78	30"	78"	LB36D84	36"	84"
LB18D66	18"	66"	LB24D84	24"	84"	LB30D84	30"	84"	LB36D90	36"	90"
LB18D72	18"	72"	LB24D90	24"	90"	LB30D90	30"	90"	LB36D96	36"	96"
LB18D78	18"	78"	LB24D96	24"	96"	LB30D96	30"	96"	LB42D48	42"	48"
LB18D84	18"	84"	LB24D120	24"	120"	LB36D48	36"	48"	LB42D60	42"	60"
LB24D48	24"	48"	LB30D48	30"	48"	LB36D54	36"	54"	LB42D72	42"	72"
LB24D54	24"	54"	LB30D54	30"	54"	LB36D60	36"	60"	LB42D84	42"	84"
LB24D60	24"	60"	LB30D60	30"	60"	LB36D66	36"	66"	LB42D96	42"	96"