



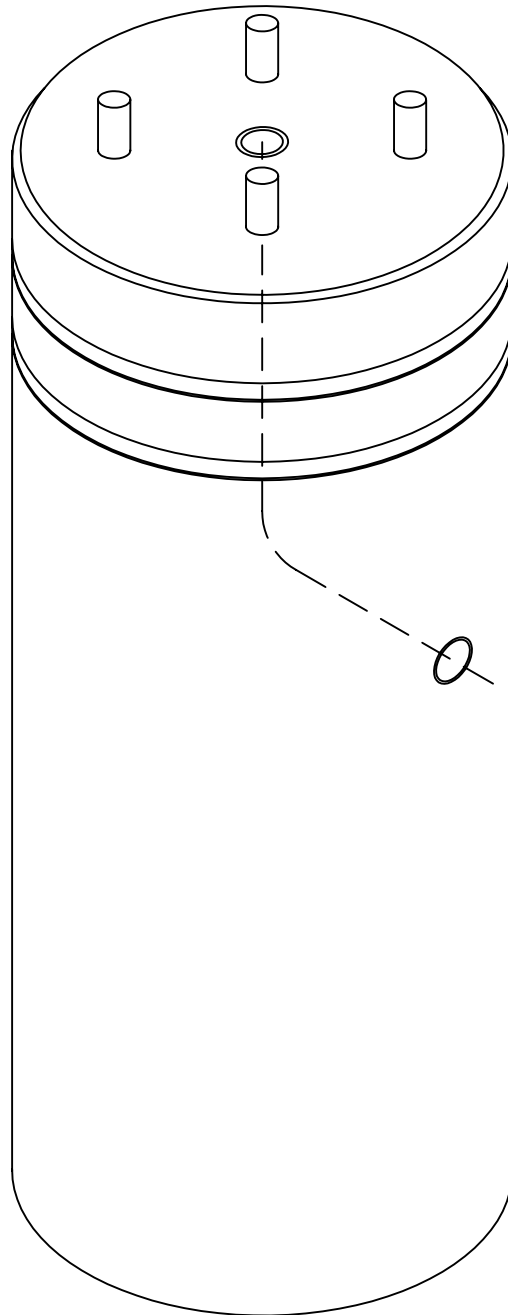
Lakelands Concrete Products, Inc.
7520 East Main St., Lima, NY 14485
Phone: 585-624-1990, Fax: 585-624-2102

Web: www.lakelandsconcrete.com
E-mail: sales@lakelandsconcrete.com

Date: 12/16/10

DWG: LBRDA

Architectural Lightbase





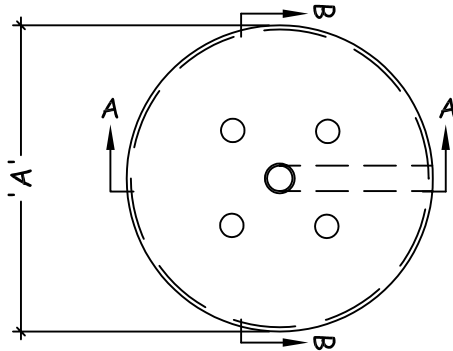
Lakelands Concrete Products, Inc.
 7520 East Main St., Lima, NY 14485
 Phone: 585-624-1990, Fax: 585-624-2102

Web: www.lakelandsconcrete.com
 E-mail: sales@lakelandsconcrete.com

Date: 12/16/10

DWG: LBRDA

Architectural Lightbase



PLAN VIEW

Specifications:

Design Criteria: 5000 Psi @28 Days

Entrained Air: 5% - 9%

Reinforcement: BAR-ASTM A615 GR60

WWR-ASTM A185/A497 GR65

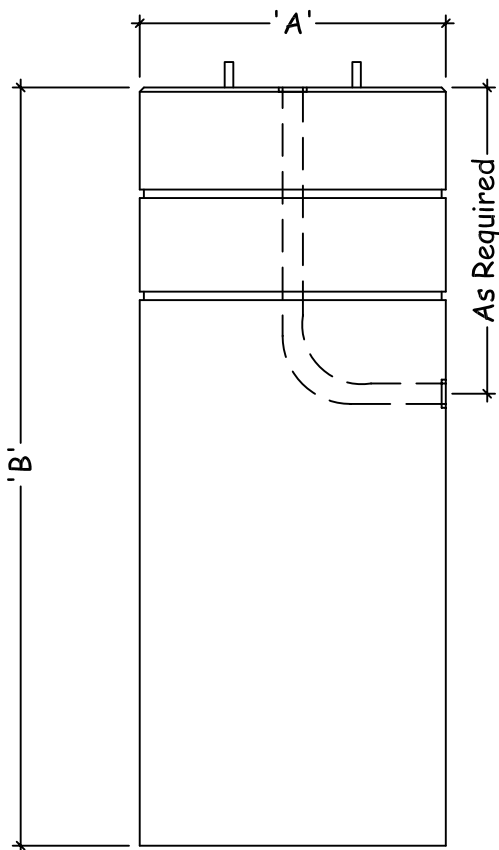
Notes:

* Anchor Bolts Supplied By Lightpole Manufacturer

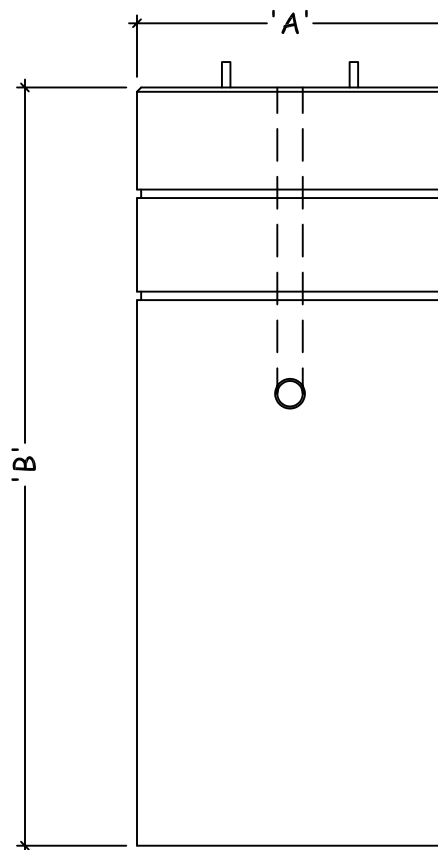
* Size And Type Of Conduit Specified By Contractor

* Steel Reinforcement As Specified

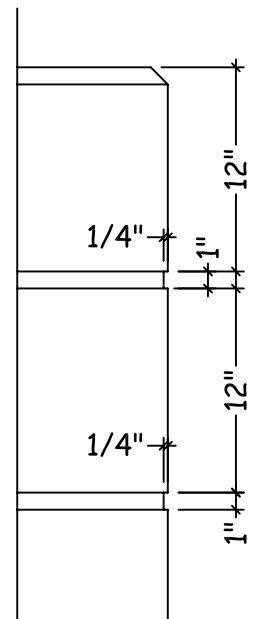
* Minimum Base Height Is 6'-0"



SECTION VIEW 'A'



SECTION VIEW 'B'



Reveal Detail

Model No.	A	B	Model No.	A	B
LB24D72A	24"	72"	LB24D90A	24"	90"
LB24D78A	24"	78"	LB24D96A	24"	96"
LB24D84A	24"	84"	LB24D120A	24"	120"