



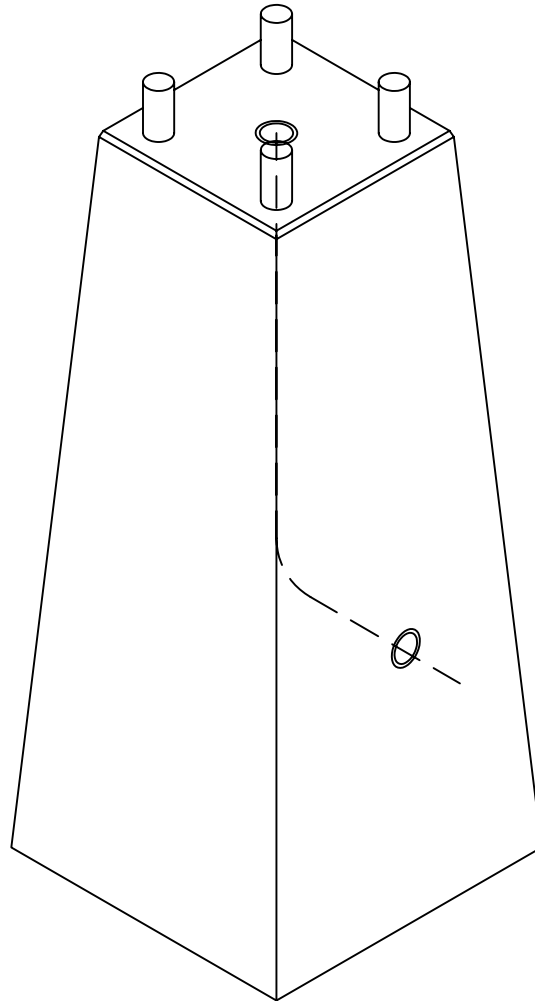
Lakelands Concrete Products, Inc.
7520 East Main St., Lima, NY 14485
Phone: 585-624-1990, Fax: 585-624-2102

Web: www.lakelandsconcrete.com
E-mail: sales@lakelandsconcrete.com

Date: 12/16/10

DWG: LBTAP

Tapered Lightbase





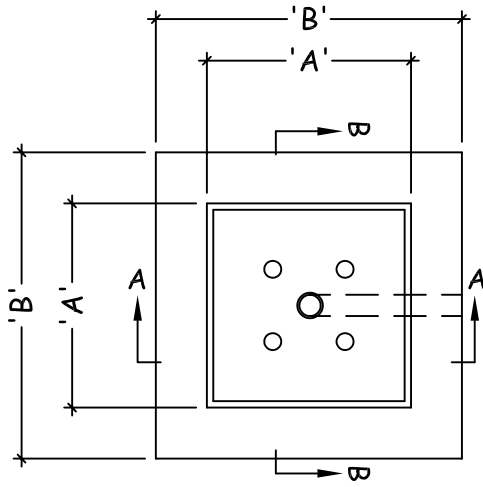
Lakelands Concrete Products, Inc.
 7520 East Main St., Lima, NY 14485
 Phone: 585-624-1990, Fax: 585-624-2102

Web: www.lakelandsconcrete.com
 E-mail: sales@lakelandsconcrete.com

Date: 12/16/10

DWG: LBTAP

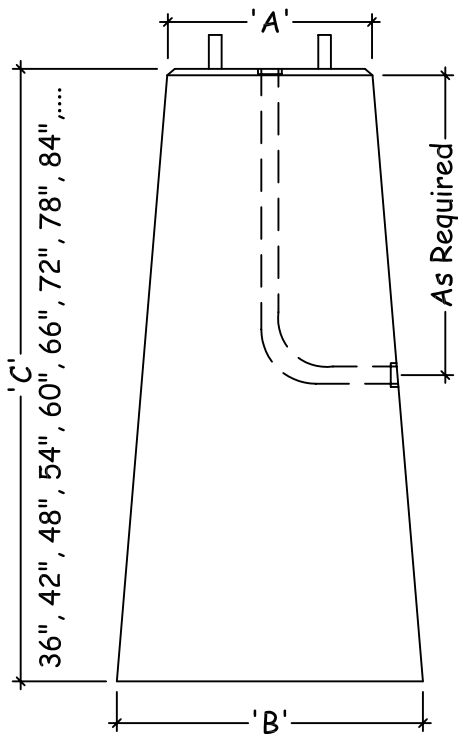
Tapered Lightbase



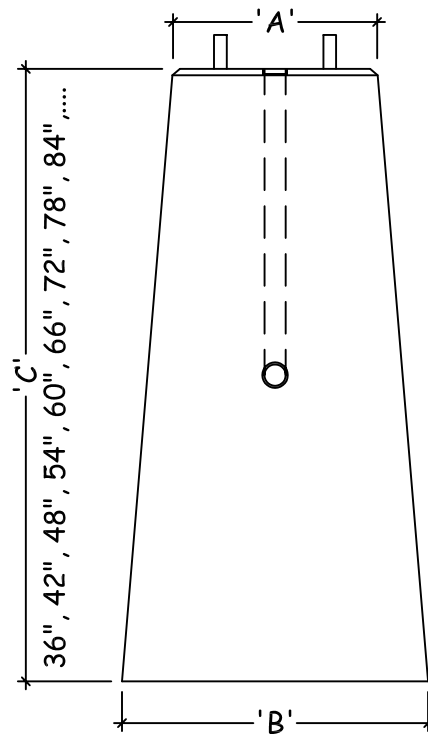
PLAN VIEW

Specifications:
 Design Criteria: 5000 Psi @28 Days
 Entrained Air: 5% - 9%
 Reinforcement: BAR-ASTM A615 GR60
 WWR-ASTM A185/A497
 GR65

- Notes:**
- *Anchor Bolts Supplied By Lightpole Manufacturer
 - *Size And Type Of Conduit Specified By Contractor
 - *Steel Reinforcement As Specified
 - *Minimum Base Height Is 6'-0"



SECTION VIEW 'A'



SECTION VIEW 'B'

Model No.	A	B	Model No.	A	B
LB1218	12"	18"	LB2230	22"	30"
LB1624	16"	24"	LB2436	24"	36"
LB1626	16"	26"	LB2442	24"	42"
LB1820	18"	20"	LB2735	27"	35"
LB1828	18"	28"	LB3036	30"	36"
LB2024	20"	24"	LB3654	36"	54"
LB2028	20"	28"			

Dimension 'C' Denotes The Height Of The Lightbase, Lightbase Heights Are Designated In The Model Number By The Last Two Digits Of An Eight Digit Model Number, An Example Is, LB121836, 36 Being The Height Of The Lightbase In Inches