



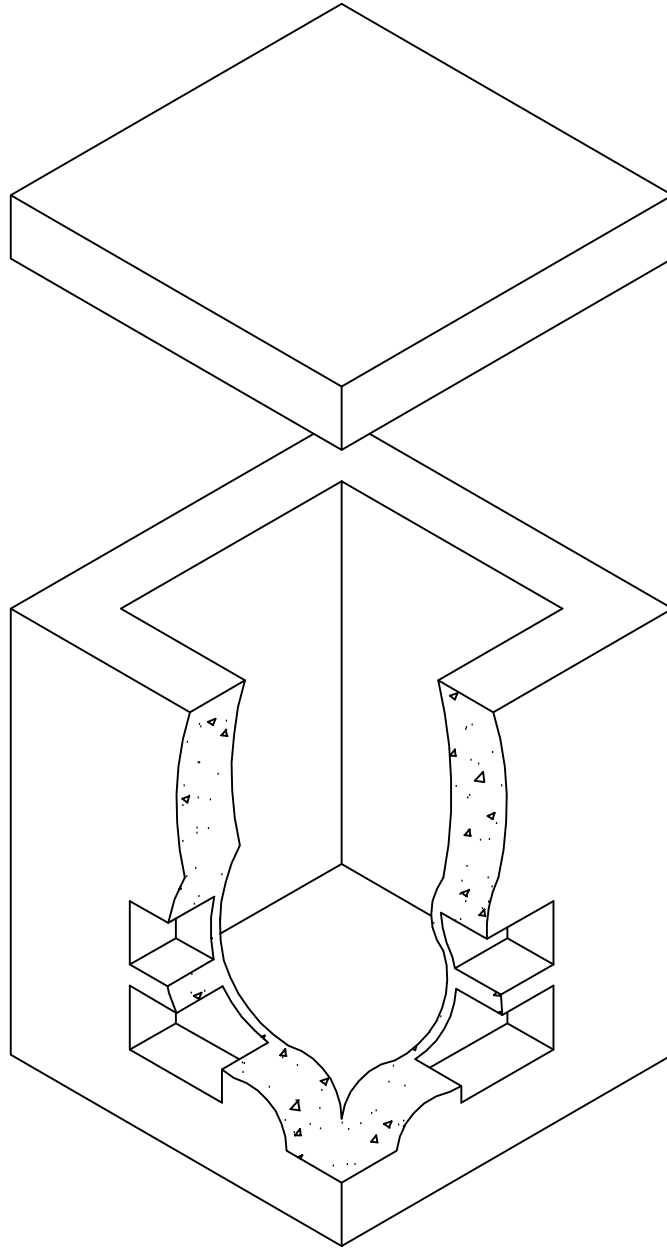
Lakelands Concrete Products, Inc.
7520 East Main St., Lima, NY 14485
Phone: 585-624-1990, Fax: 585-624-2102

Web: www.lakelandsconcrete.com
E-mail: sales@lakelandsconcrete.com

Date: 7/11/11

DWG: PB242442NB-CAT

Pullbox
24" x 24" x 42"
No Bottom





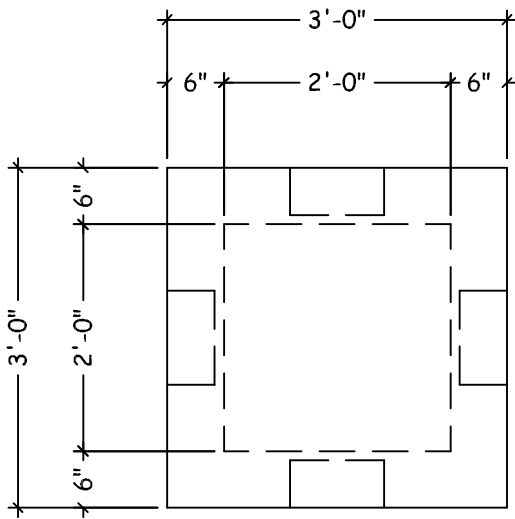
Lakelands Concrete Products, Inc.
 7520 East Main St., Lima, NY 14485
 Phone: 585-624-1990, Fax: 585-624-2102

Web: www.lakelandsconcrete.com
 E-mail: sales@lakelandsconcrete.com

Date: 7/11/11

DWG: PB242442NB-CAT

Pullbox
 24"x24"x42"
 No Bottom



PLAN VIEW

Specifications:

Design Criteria: 5000 Psi @28 Days PB2424C

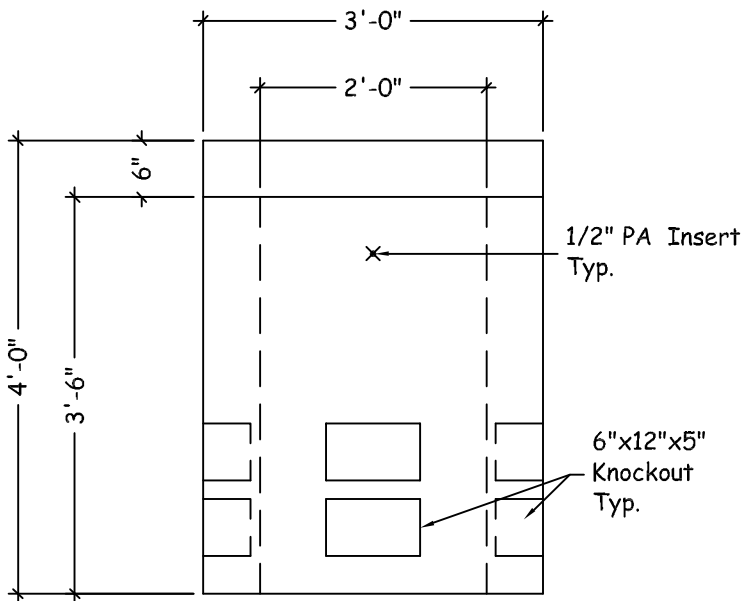
Entrained Air: 5% - 9%

Design Loading: AASHTO HS20-44 With
 Less Than 2'-0" Earth Cover

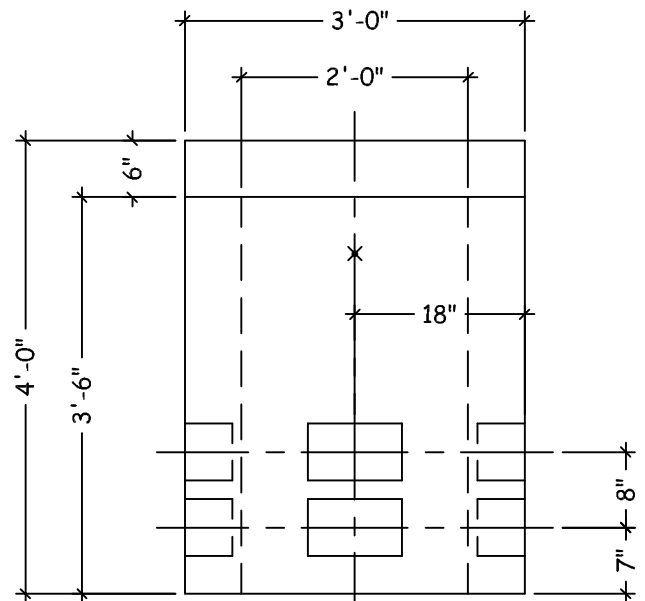
Reinforcement: BAR-ASTM A615 GR60
 WWR-ASTM A185/A497 GR65

Notes:

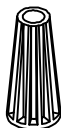
- *Concrete Cover Available With Various Size Openings
- *Various Size Knockouts Or Openings As Required
- *Cast Iron Frame And Covers Available



ELEVATION VIEW



ELEVATION VIEW



Pennsylvania Inserts

- 1/2" Bolt Diameter
- Stops Corrosion
- 2 1/2" Bolt Embedment Depth
- Work Load Strength Of 1,260lbs

Weights:

Box: 2925 lbs
 Cover: 675 lbs