



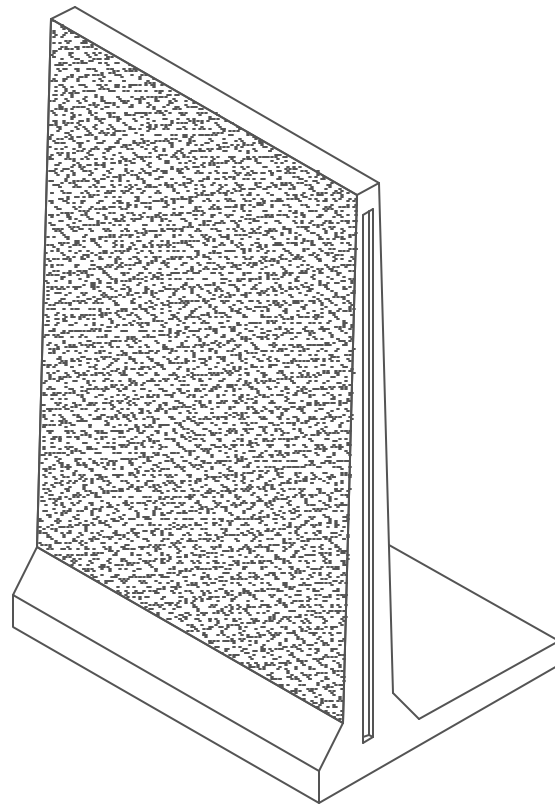
Lakelands Concrete Products, Inc.
7520 East Main St., Lima, NY 14485
Phone: 585-624-1990, Fax: 585-624-2102

Web: www.lakelandsconcrete.com
E-mail: sales@lakelandsconcrete.com

Date: 2/2/01

DWG: RW-LWALL

'L' Wall





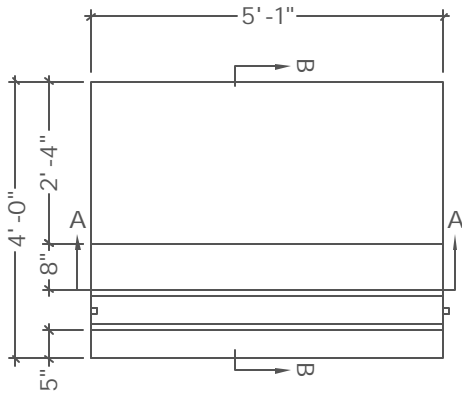
Lakelands Concrete Products, Inc.
7520 East Main St., Lima, NY 14485
Phone: 585-624-1990, Fax: 585-624-2102

Web: www.lakelandsconcrete.com
E-mail: sales@lakelandsconcrete.com

Date: 2/2/01

DWG: RW_LWALL

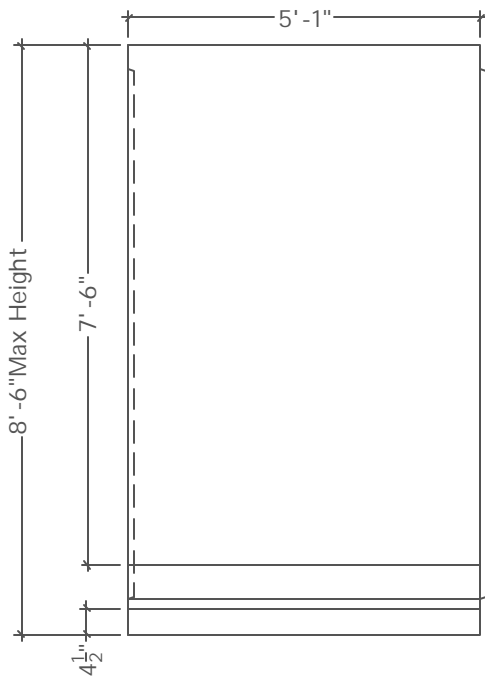
'L' Wall



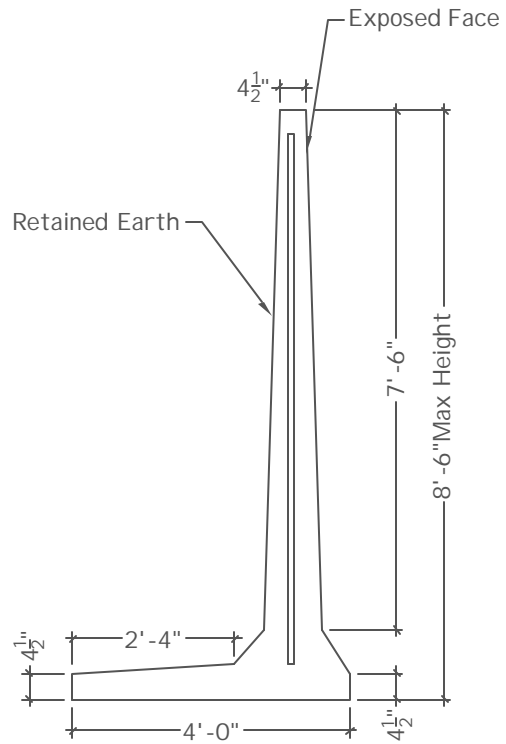
PLAN VIEW

Specifications:

Concrete: 5000psi @ 28 Days
Entrained Air: 5% - 9%
Reinforcing: $f_y = 60,000\text{psi}$ ASTM A615



SECTION VIEW 'A'



SECTION VIEW 'B'

Weight:
L-Wall: 5500 lbs