



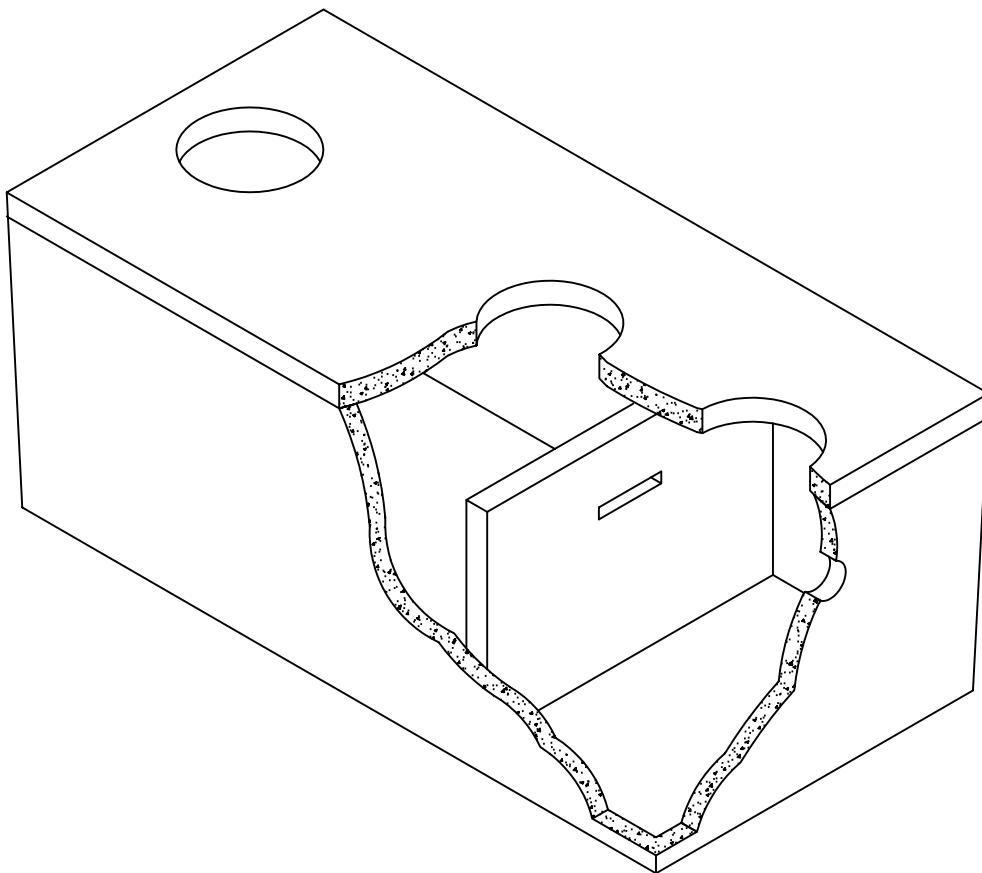
Lakelands Concrete Products, Inc.
7520 East Main St., Lima, NY 14485
Phone: 585-624-1990, Fax: 585-624-2102

Web: www.lakelandsconcrete.com
E-mail: sales@lakelandsconcrete.com

Date: 12/14/10

DWG: ST-Dual

Septic Tank Dual Compartment





Lakelands Concrete Products, Inc.
 7520 East Main St., Lima, NY 14485
 Phone: 585-624-1990, Fax: 585-624-2102

Web: www.lakelandsconcrete.com
 E-mail: sales@lakelandsconcrete.com

Date: 12/14/10

DWG: ST-Dual

Septic Tank Dual Compartment

Meets NYSDOH 10NYCRR
 Appendix 75-A

Tanks Do Not Need To Be Tested For
 Watertightness Prior To Backfilling Because
 There Are No Joints Below The Flowline.

Specifications:

Design Criteria: 5000 Psi @28 Days

Entrained Air: 5% - 9%

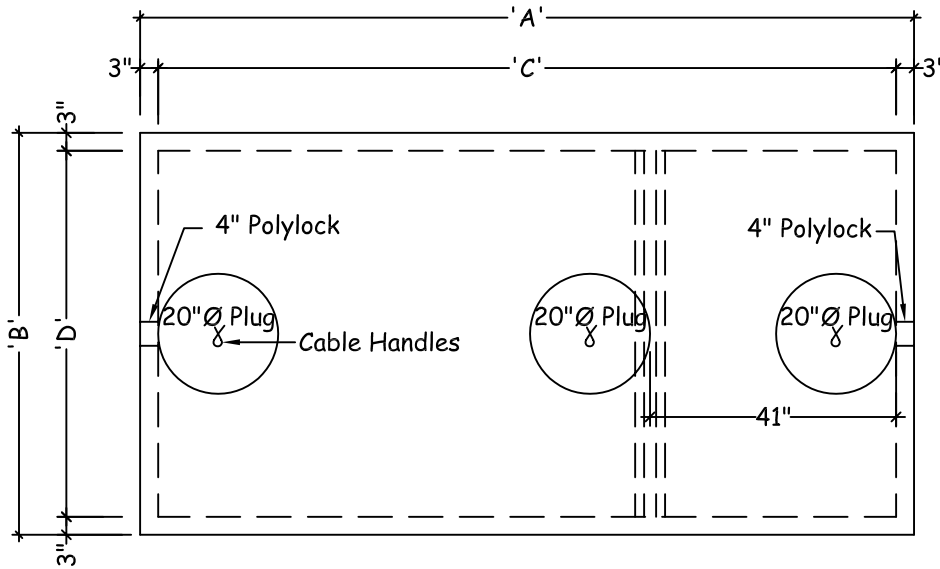
Design Loading: 300 PSF

Reinforcement: BAR-ASTM A615 GR60

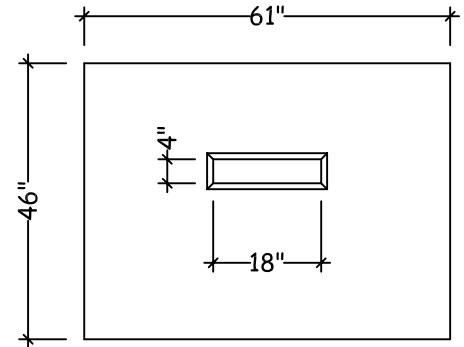
WWR-ASTM A185/A497 GR65

Note:

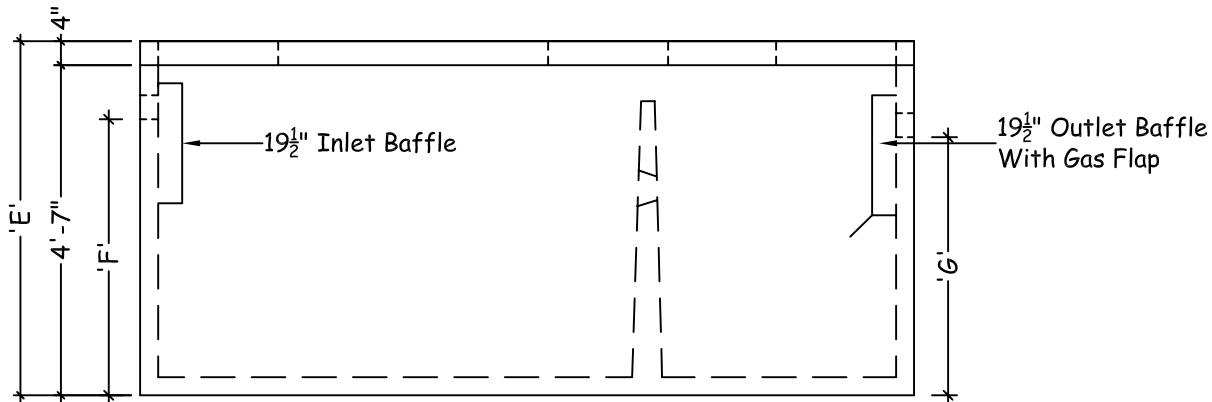
*We Can Supply Risers For Openings/Plugs



Plan View



Baffle Detail



Elevation View

| Septic Tank | A | B | C | D | E | F | G | H | I | Weight |
|-------------|------|-----|------|-----|-----|-----|-----|-----|-----|------------|
| ST1000D | 128" | 67" | 122" | 61" | 51" | 38" | 35" | 38" | 61" | 10,415 LBS |
| ST1250D | 129" | 68" | 123" | 62" | 59" | 46" | 43" | 46" | 62" | 11,435 LBS |
| ST1500D | 130" | 68" | 124" | 62" | 67" | 54" | 51" | 54" | 62" | 12,500 LBS |



Lakelands Concrete Products, Inc.
 7520 East Main St., Lima, NY 14485
 Phone: 585-624-1990, Fax: 585-624-2102

Web: www.lakelandsconcrete.com
 E-mail: sales@lakelandsconcrete.com

Date: 12/14/10

DWG: ST-Dual

Septic Tank
 Multi. Dual Compartment

Meets NYSDOH 10NYCRR
 Appendix 75-A

Tanks Do Not Need To Be Tested For
 Watertightness Prior To Backfilling Because
 There Are No Joints Below The Flowline.

Specifications:

Design Criteria: 5000 Psi @28 Days

Entrained Air: 5% - 9%

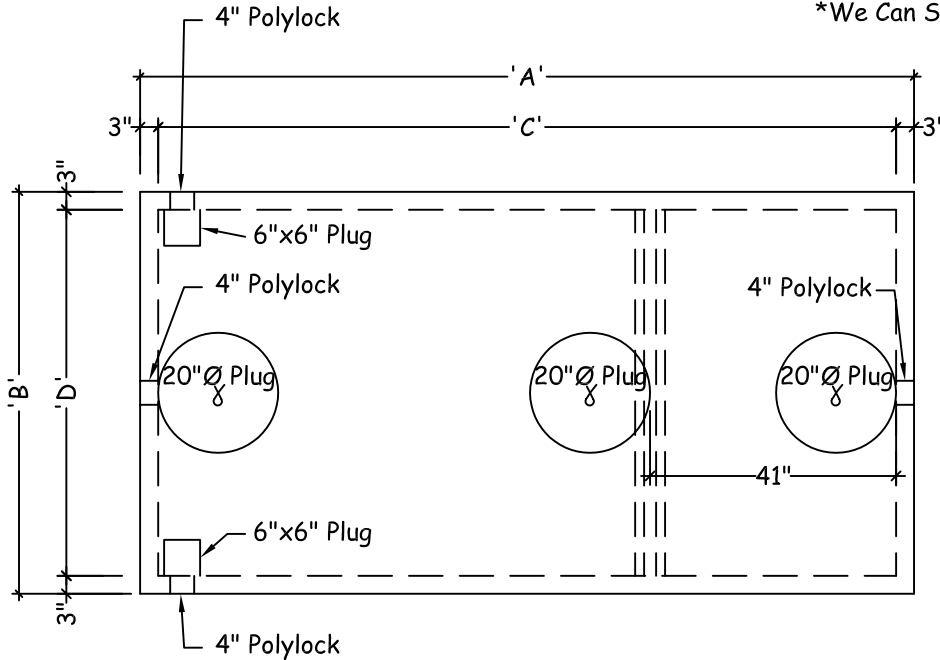
Design Loading: 300 PSF

Reinforcement: BAR-ASTM A615 GR60

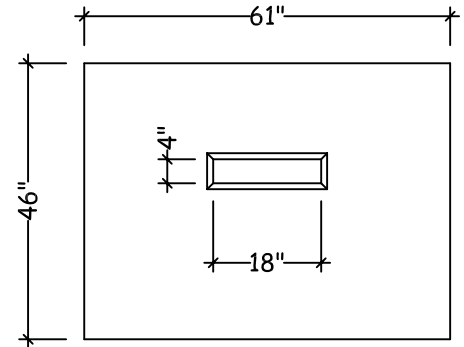
WWR-ASTM A185/A497 GR65

Note:

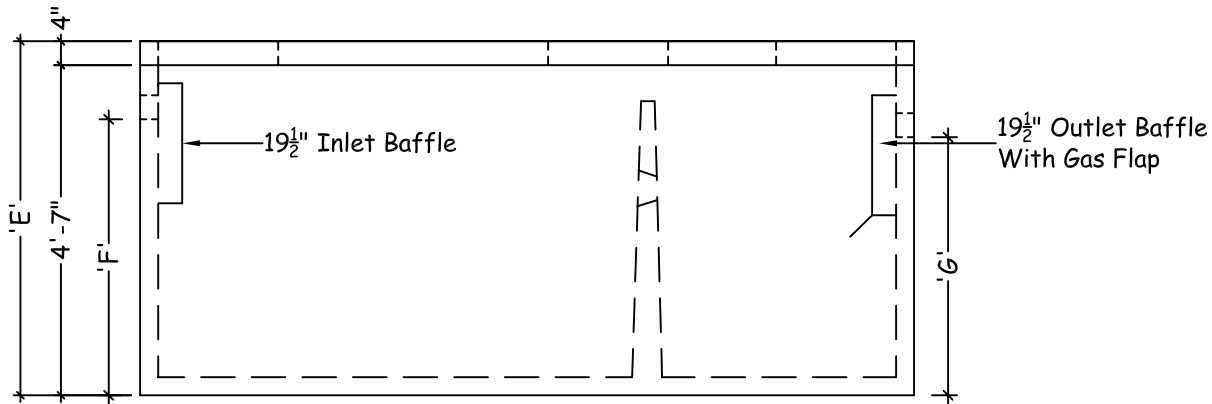
*We Can Supply Risers For Openings/Plugs



Plan View



Baffle Detail



Elevation View

| Septic Tank | A | B | C | D | E | F | G | H | I | Weight |
|-------------|------|-----|------|-----|-----|-----|-----|-----|-----|------------|
| ST1000D | 128" | 67" | 122" | 61" | 51" | 38" | 35" | 38" | 61" | 10,415 LBS |
| ST1250D | 129" | 68" | 123" | 62" | 59" | 46" | 43" | 46" | 62" | 11,435 LBS |
| ST1500D | 130" | 68" | 124" | 62" | 67" | 54" | 51" | 54" | 62" | 12,500 LBS |