



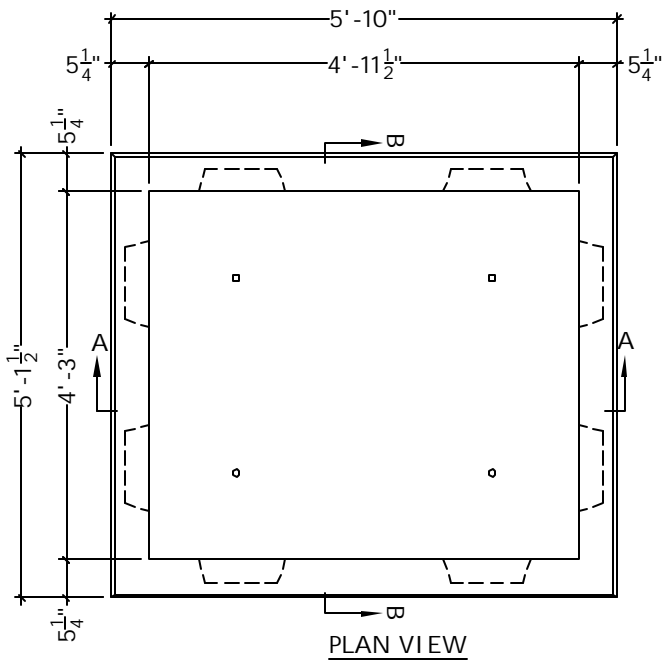
Lakelands Concrete Products, Inc.
7520 East Main St., Lima, NY 14485
Phone: 585-624-1990, Fax: 585-624-2102

Web: www.lakelandsconcrete.com
E-mail: sales@lakelandsconcrete.com

Date: 5/16/02

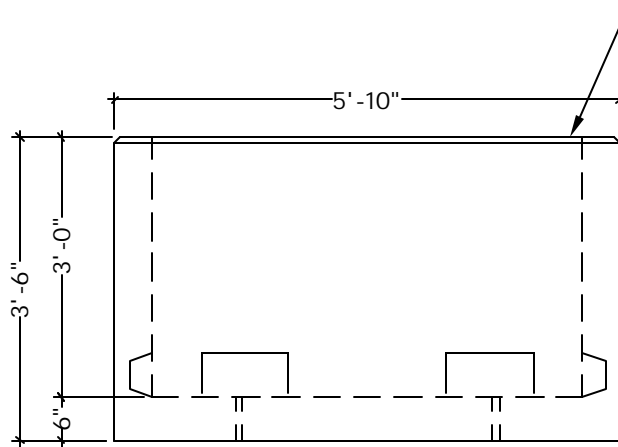
DWG: TP617042

Switchgear Box
NYSEG SS#262-730-00

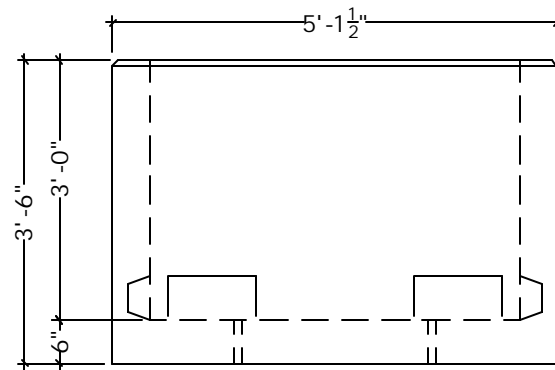


Specifications:
Concrete: 5000psi @ 28 Days
Entrained Air: 5% - 9%
Reinforcing: fy= 60,000psi ASTM A615

Notes:
*Various Size Knockouts Or Openings As Required



SECTION VIEW 'A'



SECTION VIEW 'B'

Weights:
Box: 6185#