



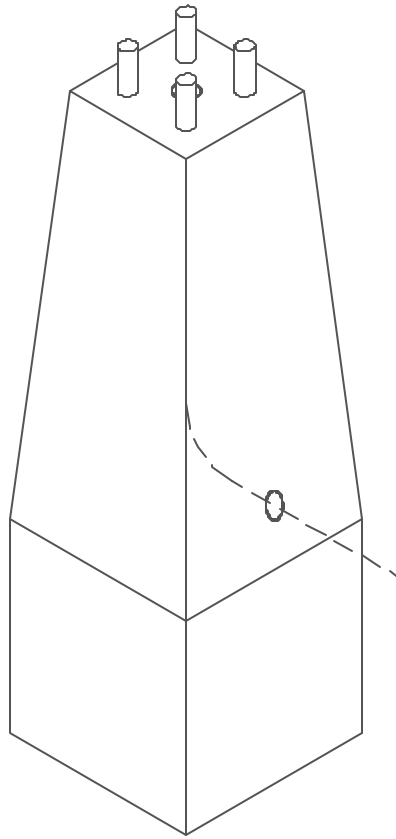
Lakelands Concrete Products, Inc.  
7520 East Main St., Lima, NY 14485  
Phone: 585-624-1990, Fax: 585-624-2102

Web: [www.lakelandsconcrete.com](http://www.lakelandsconcrete.com)  
E-mail: [sales@lakelandsconcrete.com](mailto:sales@lakelandsconcrete.com)

Date: 2/2/01

DWG: LB-D-TAP

Double Tapered  
Lightbase





Lakelands Concrete Products, Inc.  
 7520 East Main St., Lima, NY 14485  
 Phone: 585-624-1990, Fax: 585-624-2102

Web: www.lakelandsconcrete.com  
 E-mail: sales@lakelandsconcrete.com

Date: 2/2/01

DWG: LB-D-TAP

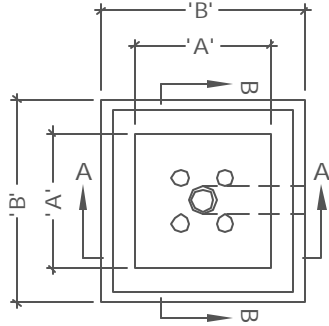
Double Tapered  
 Lightbase

Specifications:

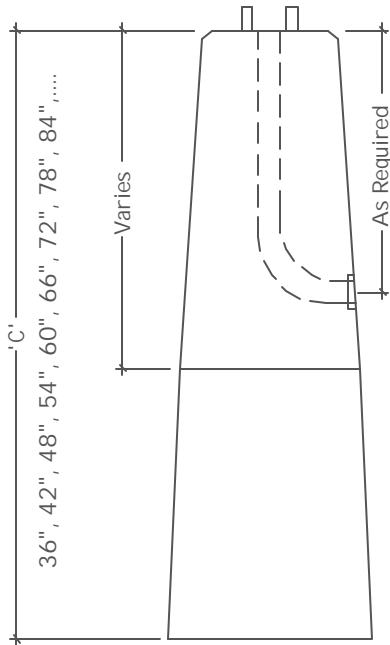
Concrete: 5000psi @ 28 Days  
 Entrained Air: 5% - 9%  
 Reinforcing: fy= 60,000psi ASTM A615

Notes:

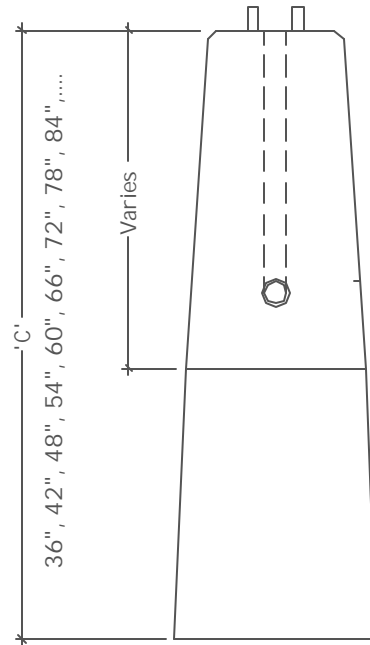
- \*Anchor Bolts Supplied By Lightpole Manufacturer
- \*Size And Type Of Conduit Specified By Contractor
- \*Steel Reinforcement As Specified



PLAN VIEW



SECTION VIEW 'A'



SECTION VIEW 'B'

Model No.	A	B	Model No.	A	B
LB1218	12"	18"			
LB1830	18"	30"			
LB1832	18"	32"			
LB2432	24"	32"			

Dimension 'C' Denotes The Height Of The Lightbase, Lightbase Heights Are Designated In The Model Number By The Last Two Digits Of An Eight Digit Model Number, An Example Is, LB121836, 36 Being The Height Of The Lightbase In Inches