



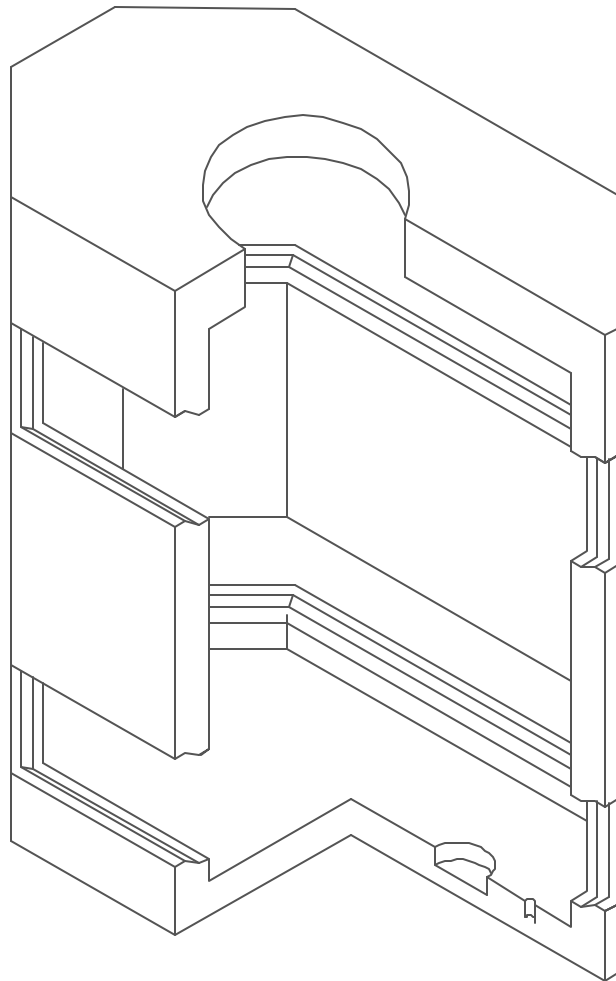
Lakelands Concrete Products, Inc.
7520 East Main St., Lima, NY 14485
Phone: 585-624-1990, Fax: 585-624-2102

Web: www.lakelandsconcrete.com
E-mail: sales@lakelandsconcrete.com

Date: 2/2/01

DWG: MH59

Manhole
5'-0" x 9'-0"





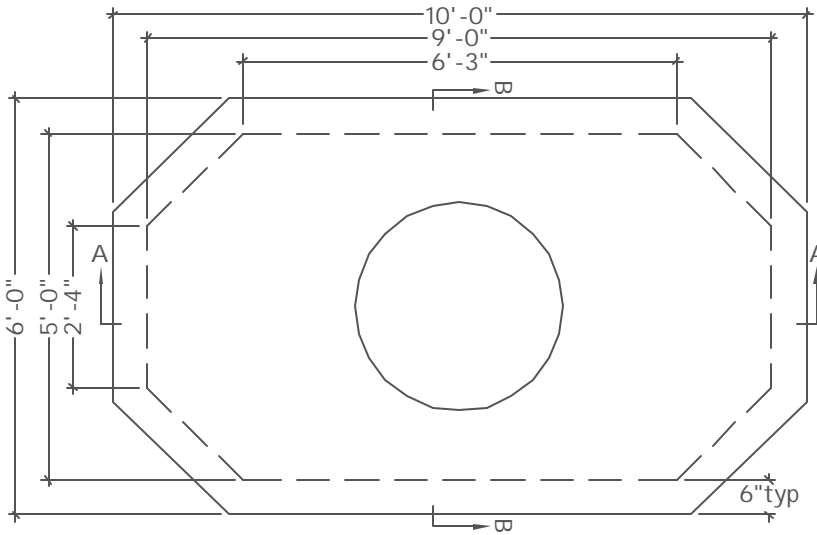
Lakelands Concrete Products, Inc.
 7520 East Main St., Lima, NY 14485
 Phone: 585-624-1990, Fax: 585-624-2102

Web: www.lakelandsconcrete.com
 E-mail: sales@lakelandsconcrete.com

Date: 2/2/01

DWG: MH59

Manhole
 5'-0" x 9'-0"



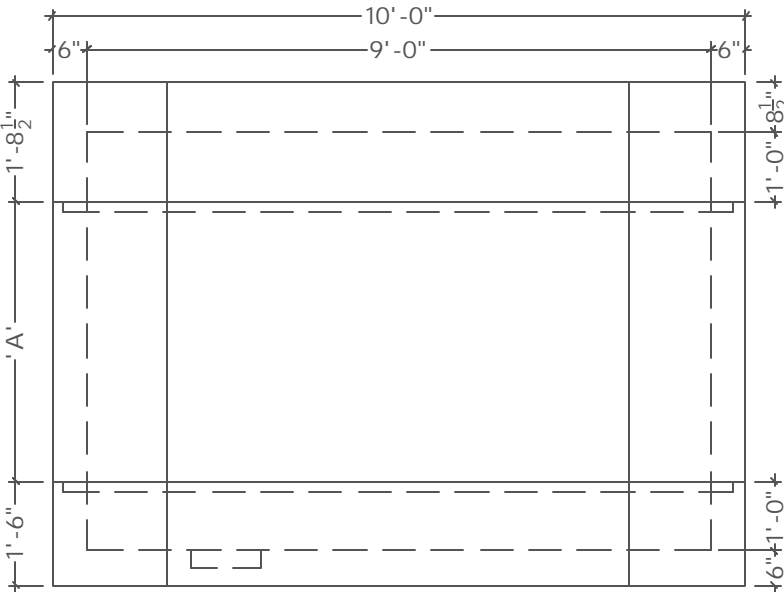
PLAN VIEW

Specifications:

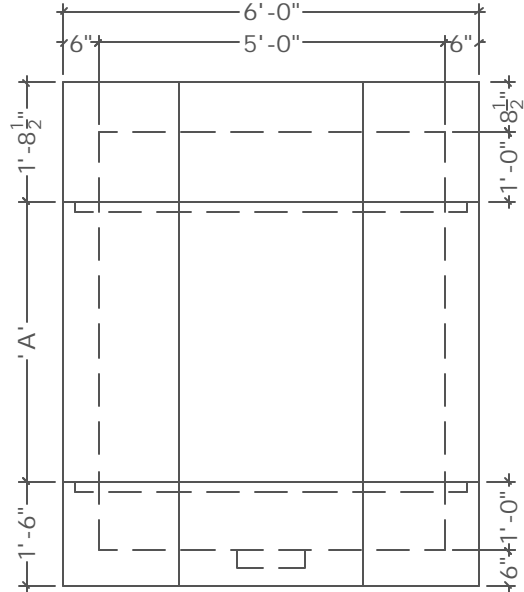
Concrete: 5000psi @ 28 Days
 Entrained Air: 5% - 9%
 Design Load: AASHTO HS20
 Reinforcing: fy= 60,000psi ASTM A615

Notes:

- *Concrete Cover Available With Various Size Openings
- *Various Size Knockouts Or Openings As Required
- *Cast Iron Frame And Covers Available



SECTION VIEW 'A'



SECTION VIEW 'B'

Model No.	A	B	*Height		Weights	Model No.	Weights
			Inside	Outside			
MH596	48"	-	6'-0"	7'-2"	22,650#	Cover	7,500#
MH5966	54"	-	6'-6"	7'-8"	23,625#	Base	6,450#
MH597	60"	-	7'-0"	8'-2"	24,705#	* Additional Heights Available Per Customer Specifications	
MH598	72"	-	8'-0"	9'-2"	26,856#		