



Lakelands Concrete Products, Inc.  
7520 East Main St., Lima, NY 14485  
Phone: 585-624-1990, Fax: 585-624-2102

Web: www.lakelandsconcrete.com  
E-mail: sales@lakelandsconcrete.com

Date: 5/4/11

DWG: STDB

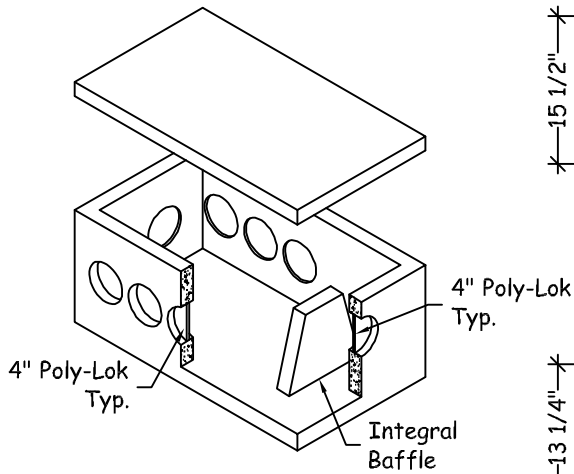
## Distribution Boxes & Drop Box

### Specifications:

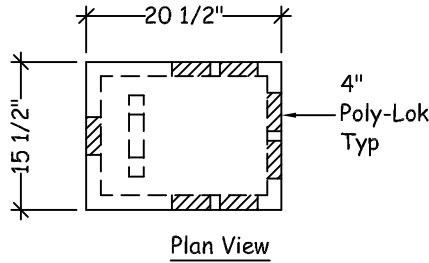
Design Criteria: 5000 Psi @28 Days

Entrained Air: 5% - 9%

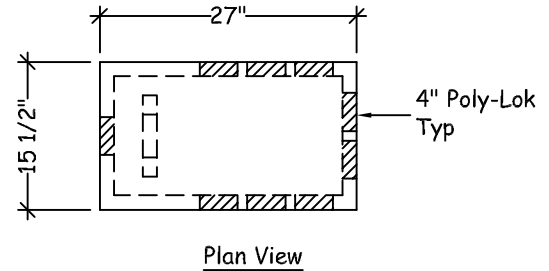
Reinforcement: BAR-ASTM A615 GR60  
WWR-ASTM A185/A497 GR65



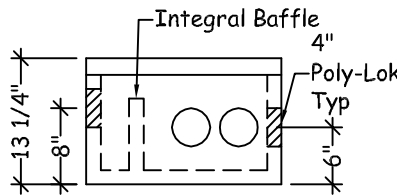
Isometric View



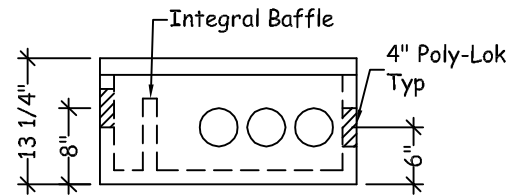
Plan View



Plan View



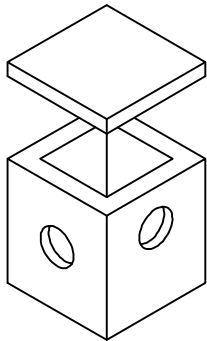
Elevation View



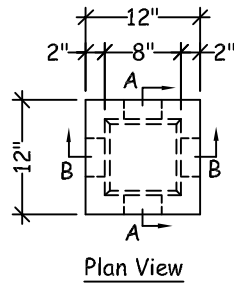
Elevation View

6 Outlet Distribution Box (DB6)  
Weight: 175 LBS

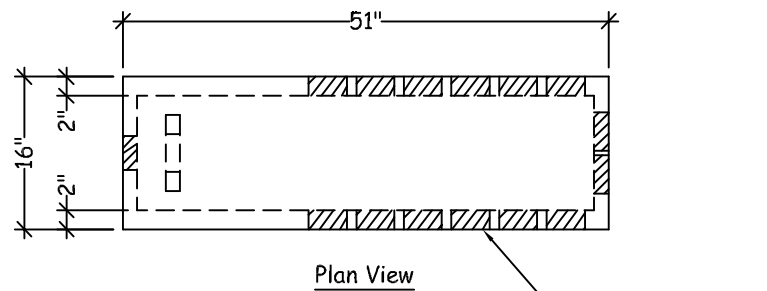
8 Outlet Distribution Box (DB8)  
Weight: 230 LBS



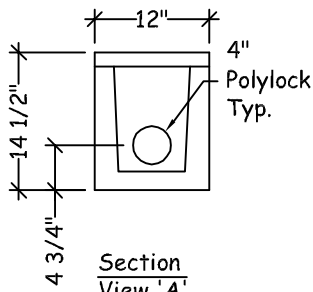
Isometric View



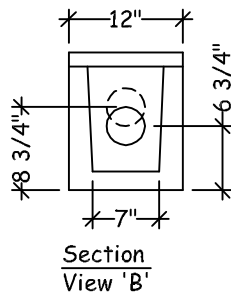
Plan View



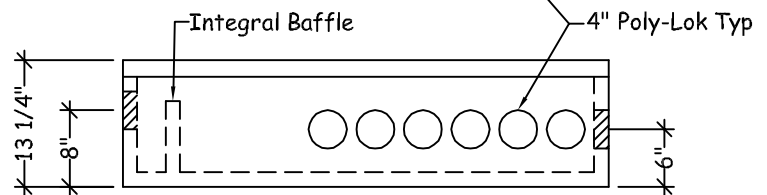
Plan View



Section View 'A'



Section View 'B'



Elevation View

Drop Box & Cover (DRB)  
Weight: 90 LBS

14 Outlet Distribution Box (DB14)  
Weight: 600 LBS