



7520 EAST MAIN STREET, LIMA NY 14485
 PH: 585-624-1990 - FAX: 585-624-2102
 WEB: WWW.LAKELANDSCONCRETE.COM
 E-MAIL: SALES@LAKELANDSCONCRETE.COM

DATE: 11/3/2020

DWG: STR

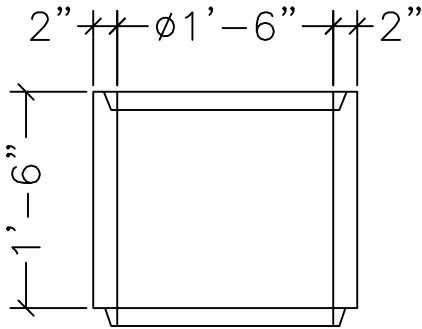
SEPTIC TANK RISERS

DESIGN CRITERIA:

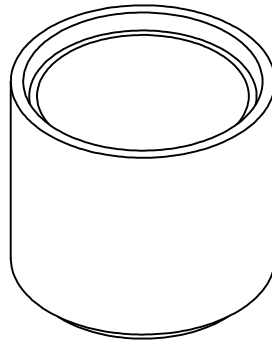
CONCRETE: 5000 PSI @ 28 DAYS
 ENTRAINED AIR: 5% - 9%
 DESIGN LOADING: 300 PSF
 REINFORCEMENT: BAR-ASTM A615 GR60
 WWR-ASTM A185

SPECIFICATIONS:

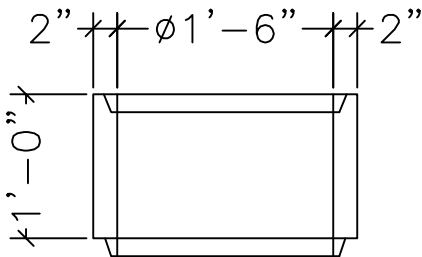
1. THESE RISERS ARE PRODUCED SPECIFICALLY TO ACCEPT THE STANDARD $\phi 20$ " PLUGS



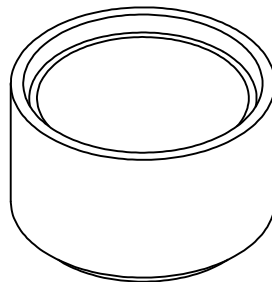
ELEVATION VIEW



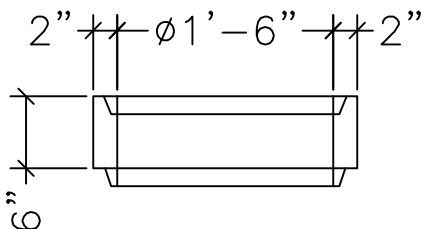
ISOMETRIC VIEW



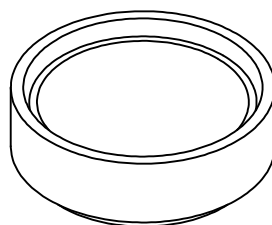
ELEVATION VIEW



ISOMETRIC VIEW



ELEVATION VIEW



ISOMETRIC VIEW

RISER HEIGHT	WEIGHT (LBS)
<input type="checkbox"/> 6" QTY: ____	65
<input type="checkbox"/> 12" QTY: ____	129
<input type="checkbox"/> 18" QTY: ____	194
ADDITIONAL SIZES ARE AVAILABLE. PLEASE NOTIFY LAKELANDS	