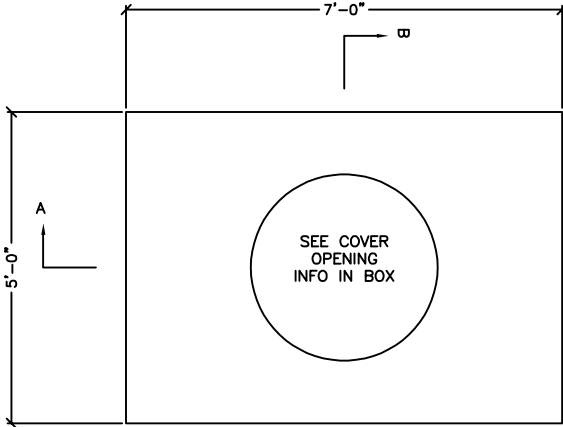


MANHOLE

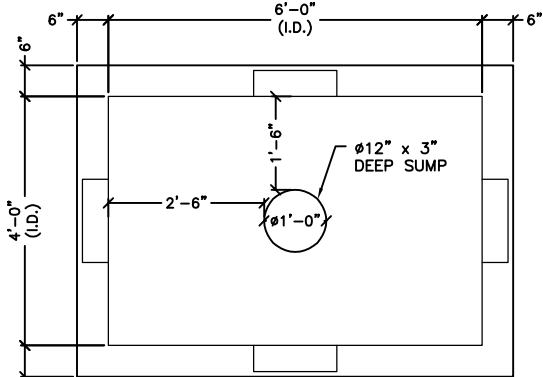
4'-0" x 6'-0" x 7'-0"

DESIGN CRITERIA:

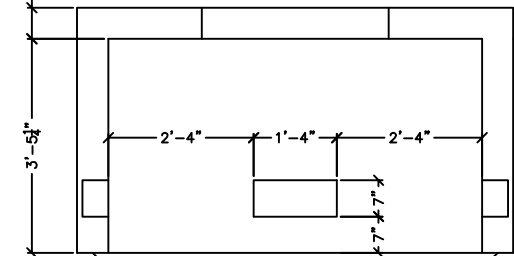
CONCRETE: 5000 PSI @ 28 DAYS
 ENTRAINED AIR: 5% - 9%
 DESIGN LOADING: AASHTO HS20-44 WITH
 LESS THAN 2'-0" EARTH COVER
 REINFORCEMENT: BAR-ASTM A615 GR60
 WWR-ASTM A185/A497 GR65



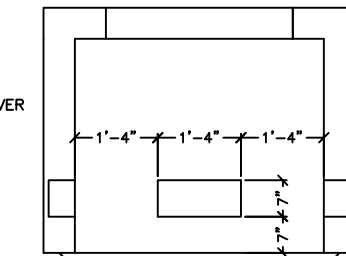
PLAN VIEW
(COVER ONLY)



PLAN VIEW
(COVER REMOVED)



ELEVATION VIEW
(SECTION A-A)



ELEVATION VIEW
(SECTION B-B)

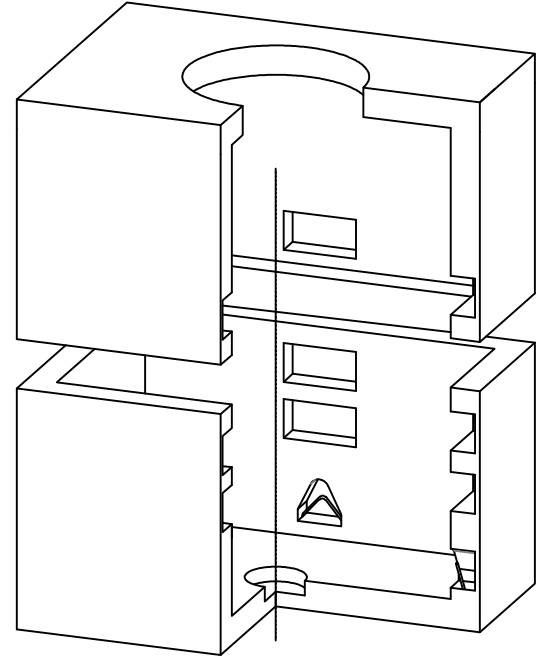
- Ø30" COVER OPENING
- Ø36" COVER OPENING
- OTHER

****COVER OPENING SIZES ARE STANDARD SIZES AND CENTERED IN THE PRECAST COVER. CUSTOM SIZES ARE AVAILABLE AT THE CUSTOMERS REQUEST. LOCATION CAN VARY.**

**WITH STOCK
Ø36" OPENING

COMPONENT	WEIGHT (LBS)
COVER	8297
BOX	8503
TOTAL	16800

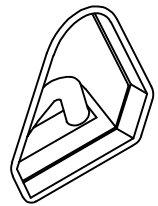
****HEIGHT MAY VARY UP TO 7'-11 1/2" INSIDE HEIGHT****



ISOMETRIC VIEW

SPECIFICATIONS:

1. KNOCKOUTS SHOWN ARE STANDARD. VARIOUS KNOCKOUT TYPES ARE AVAILABLE, OPENINGS AS REQUIRED.
2. PULLING IRONS ARE STANDARD, CUSTOM QUANTITY AND LOCATION AS NEEDED
3. CAST IRON FRAME AND GRATES AVAILABLE FOR PURCHASE.



BOWCO INSERT PULLING IRON
 -NONCORROSIVE
 -SEVEN STRAND, 1/2"Ø, WITH AN ULTIMATE STRENGTH OF 270,000 PSI
 -ENCAPSULATED BY A RUSTPROOF SLEEVE THAT SLIPS OVER THE STEEL ROPE AT THE HOOKING POINT